



LEGEND:

1. NEW LIBRARY WALK - ENHANCED PLANTING
2. CAFE PLAZA - WELCOME ARCHWAY, SEATING, GATED ACCESS FROM WATER AND PUBLIC ACCESS FROM SUSAN COURT
3. NEIGHBORHOOD PLAZA - PATHWAY CONNECTIONS, SEAT WALL, PUBLIC ART
4. EXISTING DOCK TO BE REMOVED FROM THIS LOCATION
5. WATER VIEW PLAZA - RELOCATED DOCK, PEDESTRIAN PLAZA W/ ACCENT SEAT ELEMENTS AND PUBLIC ART, PATHWAY CONNECTIONS
6. ARRIVAL PLAZA - DROP-OFF AREA W/ SEAT-SIGN WALLS, PALM TREES PROMENADE W/ ACCENT SEAT ELEMENTS, ACCENT VEH + PEDESTRIAN PAVING, GATED ACCESS FROM WATER AND PUBLIC ACCESS FROM ARRIVAL PLAZA
7. WATERFRONT PROMENADE - PATHWAY W/ BENCHES AND BOLLARD LIGHTS
8. SLOPED WATER EDGE - NEW PLANTING (DUNK HEAD EDGE NOTED IN DASHED LINE)
9. BLDG PLAZA - BIKE / WATERSPORTS EQUIPMENT ROOM ACCESS, BLDG LOUNGE AREA ACCESS
10. COMMUNITY POOL - SUN DECK, GREEN WALL AT BLDG PARKING, LOUNGE + OUTDOOR KITCHEN AREA, GATED ACCESS (GLASS POOL FENCE)
11. REST PLAZAS - SEAT WALLS, ACCENT SEAT ELEMENT & PEDESTRIAN PAVING
12. PICNIC PLAZA - PICNIC TABLES UNDER PALM TREES PROMENADE, BBQS, DG PAVING W/ ACCENT BANDS
13. EXISTING STEPS AND RETAINING WALLS TO WATER EDGE (TO REMAIN / TBD)
14. RESIDENTIAL PATHWAY CONNECTION - PEDESTRIAN GATE ACCESS
15. CORNER PLAZA - SEAT-SIGN WALL (2' TALL), ACCENT PAVING & PLANTING
16. CITY SIDEWALK A-9 STANDARD - 6' WIDE PLANTING STRIP W/ STREET TREES @ S NORFOLK ST (NO TREES @ SUSAN CRT), 6' WIDE CONCRETE SIDEWALK; BREAK AREAS W/ BENCHES, PEDESTRIAN SCALE POLE LIGHTS & RECEPTACLES IN DG, ACCENT PLANTING
17. DRIVE IN W/ PARKING AND LOBBY PLAZA - TREE PROMENADE, ACCENT PEDESTRIAN AND VEH. PAVING, PLANTING SCREENING FROM STREET (@ PARKING STALLS)
18. SHORT TERM BICYCLE PARKING
19. 45° SIGHT TRIANGLE



BDE
ARCHITECTURE

WINDY HILL
PROPERTY PARTNERS

THE
GUZZARDO PARTNERSHIP INC.
Landscape Architects • Land Planners



1855 S. NORFOLK ST

SITE LANDSCAPE PLAN

L-1.2

1855 S. NORFOLK ST

MARCH 30, 2023

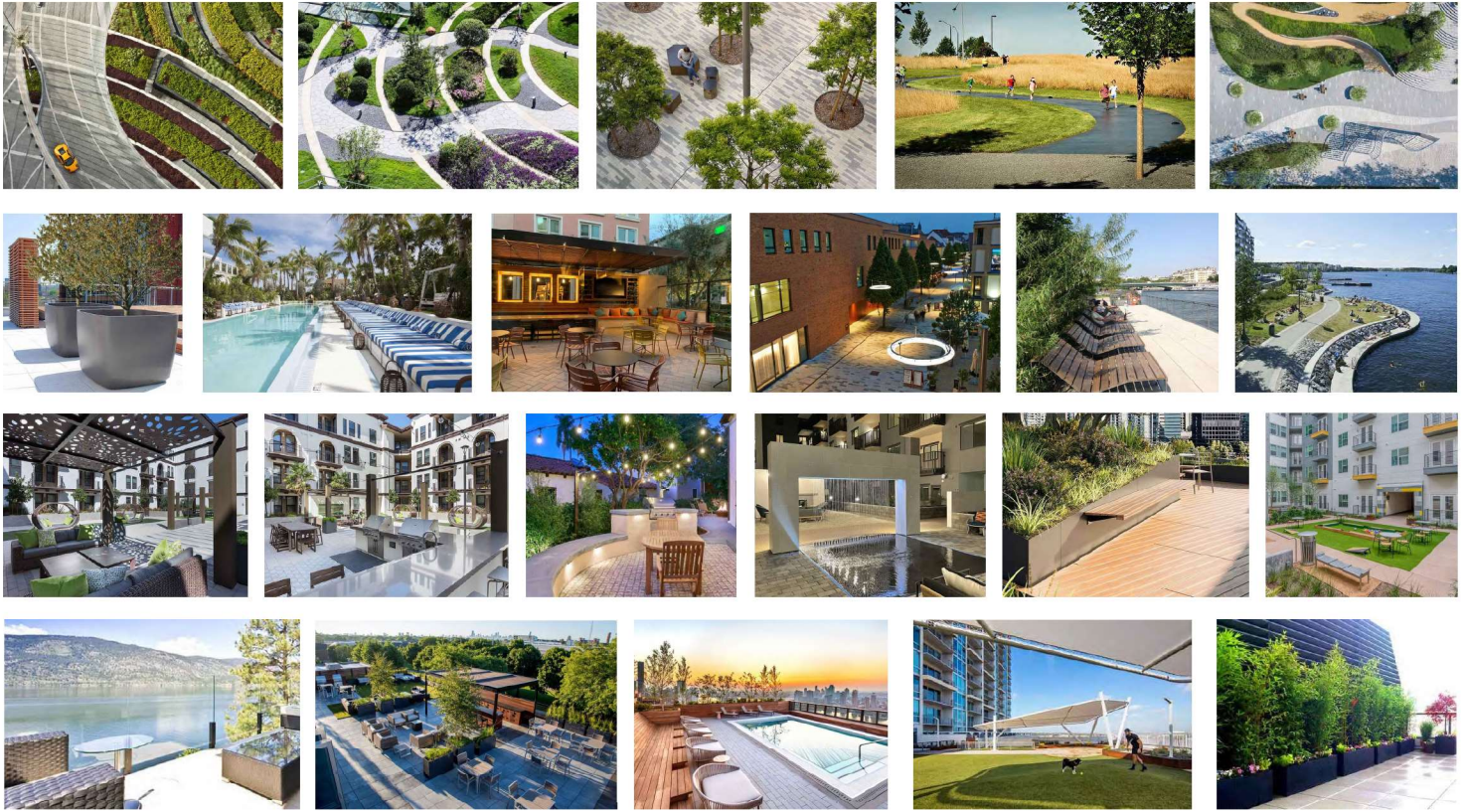
All drawings and written material appearing herein constitute original, and unpublished work of the architect and may not be reproduced, made or disclosed without the written consent of the architect.

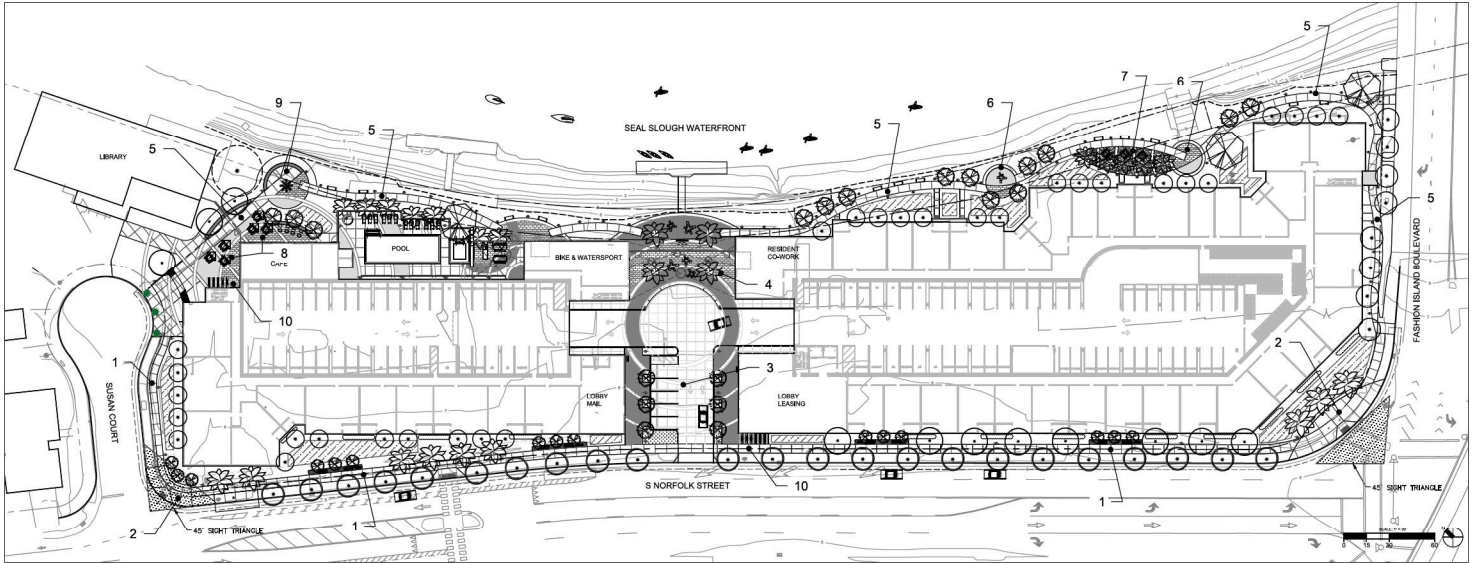


CAFE PLAZA ENLARGEMENT

SCALE: 1/8" = 1'

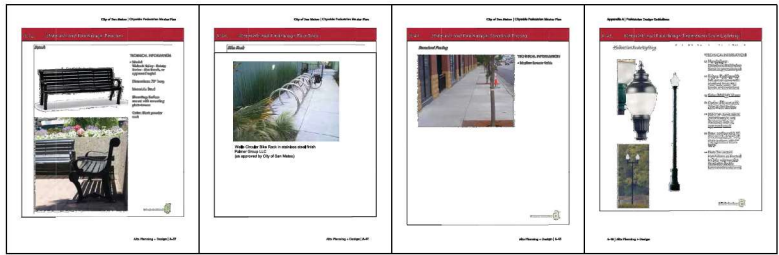






- LEGEND:
1. CITY SIDEWALK, STANDARD A-2: PEDESTRIAN CONCRETE PAVING, BENCH, TRASH RECEPTACLE, PEDESTRIAN SCALE POLE LIGHT, BIKE RACKS
 2. CORNER PLAZAS: PEDESTRIAN CONCRETE PAVING (CITY OF SAN MATEO STANDARD), LOW SEAT / SIGN CONCRETE WALL (2' TALL)
 3. DRIVE-IN: VEHICULAR + PEDESTRIAN ACCENT PAVING W/ CONCRETE BANDS, TREE GRATES, PEDESTRIAN SCALE POLE LIGHTS
 4. BLDG CENTRAL CORE PLAZA: PEDESTRIAN ACCENT PAVING W/ CONCRETE BANDS, LOW SEAT / CONCRETE SEAT WALL, SEAT ELEMENTS, CATENARY LIGHTS, PUBLIC ART, GATE SYSTEM ENCLOSURE, SEE SHEET L-2.2
 5. CONNECTION PATHWAYS: PEDESTRIAN CONCRETE PAVING, BOLLARD LIGHTS, BENCHES
 6. REST PLAZAS: PEDESTRIAN ACCENT PAVING, LOW SEAT / SIGN WALL, SEAT ELEMENTS
 7. PICNIC PLAZA: PICNIC TABLES AND BBQs, DECOMPOSED GRANITE PAVING, CONCRETE PAVING BANDS
 8. CAFE PLAZA: PICNIC TABLES, PEDESTRIAN ACCENT PAVING W/ CONCRETE PAVING BANDS, PEDESTRIAN SCALE POLE LIGHTS, GATE SYSTEM ENCLOSURE, SEE SHEET L-2.2
 9. NEIGHBORHOOD PLAZA: PEDESTRIAN ACCENT PAVING, LOW SEAT / SIGN WALL, SEAT ELEMENTS, PUBLIC ART
 10. BIKE RACKS - SHORT TERM BICYCLE PARKING (2 BIKES PER RACK)
- * STREET / AREA SCALE LIGHTS NOT SHOWN / PENDING FUTURE PHOTOMETRIC STUDIES

CITY OF SAN MATEO STANDARD FURNISHINGS (SEE PLAN AND LEGEND #1, #2):



1855 S. NORFOLK ST

SITE LANDSCAPE MATERIALS PLAN

L-4.1

1855 S. NORFOLK ST

MARCH 30, 2023

All drawings and written material appearing herein constitute original and confidential work of the architect and may not be published, used or disclosed without the written consent of the architect.

PEDESTRIAN AND VEHICULAR CIRCULATION PAVING
Type 1 Natural gray concrete with light brown finish,
 Sweeper dependent concrete paving, scoring @ 7.0 C.M. as shown on plans.

PEDESTRIAN ACCENT PAVING (SITE AND PODIUM)
 Precast Concrete Paving Units w/ dual mix design using Duraflex/Face-Mix technology.
 Integral through colors not acceptable. By Calstone, contact Denton Burdick, Ltd. (408) 594-4084

Type 1 Pedestrian Mission Series 12x12 x 60mm:
 color: gray (70%), 92 cream (30%) w/ black aggregate, grinded/30%, finish: ground
 face, pattern: random stacked.

Type 2 Pedestrian Mission Series 6x6 x 60mm:
 color: 92 cream (70%), 53 light gray w/ black aggregate, grinded/30%, finish: ground
 face, pattern: random stacked.

Type 3 Pedestrian Mission Series 6X12 x 60mm:
 color: light gray 53 (50%), charcoal 55 (50%), finish: ground face, pattern: linear running
 bond, see details.

*Note: Paver symbols do not accurately reflect paver shapes.
 *Contractor to submit samples and field mockup to Landscape Architect for approval prior to
 acquisition or installation.

DECOMPOSED GRANITE PAVING
 By: Lyngo Garden Materials, Ltd.(650) 364-1730
 Sunset Gold Path Finest Stablized
 *Contractor to submit sample to Landscape Architect for review.

FENCES / GATES / GUARDRAILS / RAILINGS
 Steel tube construction w/ metal mesh, see construction details.
 HSS metal tube, color/finish: powdercoat or paint, matte black color (to match arch, metal finish).
 Gate Hardware to be black (not painted) by others.
 Metal Plating: By Harsco, Ltd. 508.979.0660, Model: Tidal. Color: black matte, coat to size.

Prime all metal work with one (1) coat of rust-inhibiting paint. Apply two (2) coats of black paint to all
 exposed metal work except gate hardware. Provide shop drawings for all fences and shade str.
 prior to fabrication.

GLASS POOL FENCE
 By: Kinolo Glass, Ltd. (714) 568-1598
 Kinolo Pool Enclosure GlassWall System Fence w/ Gates: Steel tube construction post, Glass
 panels.

PLANTER POTS
 by Yant Art, contact Jason Levine, Ltd. 899-362-8900,
 Capsule Planter, Model: CAP-01, size: 20" x 27.5", aluminum, color: linen white,
 with Drainage Holes & Irrigation System, QTY (12)

SEAT / SIGN WALL
 Painted in place concrete wall, color/finish: light gray-white w/ smooth finish.

TREE GRATE
 By Urban Accessories, contact Recreation Republic, Ltd. 760-490-4030
 Sid tree grate, Model: Fan, finish: black powdercoat,
 QTY (X)

SEAT ELEMENT
 By Landscape Forms, contact Rebecca Casey, Ltd. 800.430.6206 x 1313
 Escotef, Model: Flo-4 (surface mount), color/finish: white concrete, and end middle legs
 for attachment, w/ divider walls / skate deterrents in matte black, install per manu, spec,
 QTY (X)

BENCH
 By Landscape Forms, contact Rebecca Casey, Ltd. 800.430.6206 x 1313
 Generation 50, Model: Bench 30 w/o back (surface mount), color/finish: matte black steel
 frame, wood slats, w/ divider walls / skate deterrents in matte black, install per manu, spec,
 QTY (X)

PONIC TABLE
 By Landscape Forms, contact Rebecca Casey, Ltd. 800.430.6206 x 1313
 Chatter, Model: ponic table (surface mount), color/finish: matte black steel frame w/ umbrella
 hole, install per manu, spec, QTY (X)

TRASH RECEPTACLE
 By Landscape Forms, contact Rebecca Casey, Ltd. 800.430.6206 x 1313
 Generation 50, Model: trash receptacle w/ 2 bins (surface mount), color/finish: matte black
 steel frame, wood slats, install per manu, spec,
 QTY (X)

RECYCLE RECEPTABLES (PUBLIC SIDEWALK)
 Per city standards

BENCH (PUBLIC SIDEWALK)
 Per city standards

STREET LIGHT (PUBLIC SIDEWALK)
 Per city standards

BIKE RACK (PUBLIC SIDEWALK)
 Per city standards

LIGHTS
 By Landscape Forms, contact Rebecca Casey, Ltd. 800.430.6206 x 1313
 PEUCED (HARM-01-ALC-POLE LIGHT)
 Motive Collection, Model: Motive Area Light, color/finish: matte black, optics bid
 Motive Collection, Model: Motive Path Light, color/finish: matte black, optics bid

CATNARY LIGHTS
 By Structure, contact: CAL LIGHTING - SAN ROMAN, Ltd. 855-922-5584
 Aura Ring w/ exterior catenary cable mounting
 Model: ALPRA-RING-CAL-30-MCH-CT-CAL-STO, color/finish: matte black steel ring,
 QTY (X)

SOLLARI LIGHT
 Model: ALPRA-RING-CAL-30-MCH-CT-CAL-STO, color/finish: matte black steel ring,
 QTY (X)

PEDESTRIAN ACCENT PAVING

DECOMPOSED GRANITE PAVING

CONCRETE PAVING & CONCRETE BANDS

SEAT / SKIN WALL

TREE GRATE

METAL FENCE / GATES

GLASS POOL FENCE

BENCH

SEAT ELEMENT

PICNIC TABLE

TRASH RECEPTACLE

PEDESTRIAN SCALE POLE LIGHT

BOLLARD LIGHT

GATENARY LIGHT



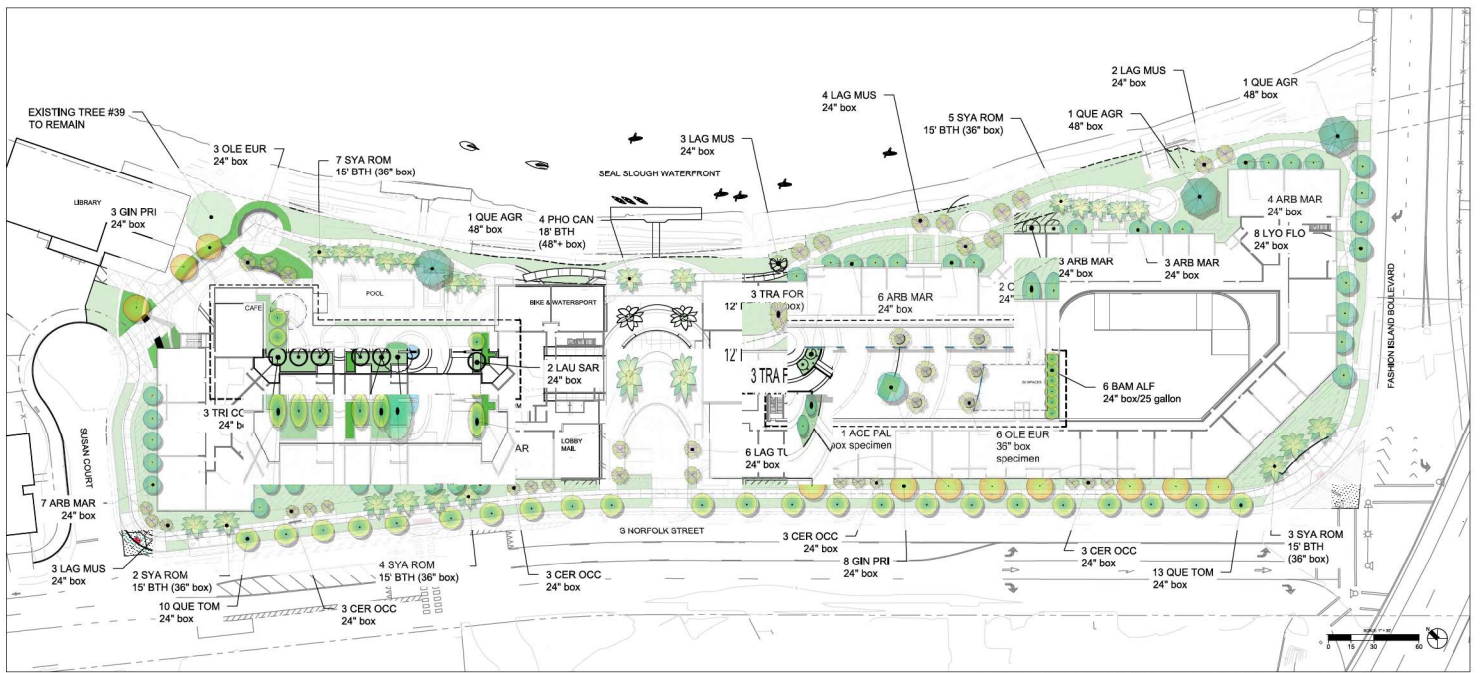
1855 S. NORFOLK ST

SITE LANDSCAPE MATERIALS SCHEDULE L-4.2

1855 S. NORFOLK ST

MARCH 30, 2023

All drawings and written material appearing herein constitute original and unpublished work of the architect and may not be duplicated, used or disclosed without the written consent of the architect.



* SITE, 2ND FLOOR PODIUM (LEFT) AND ROOF (RIGHT) MATRIX PLANS SHOWN



PLANT LEGEND

| KEY | SIZE | BOTANICAL NAME | COMMON NAME | NOTES | WUCOLS |
|---|-------|----------------------------------|---------------------------------|----------|--------|
| TREES * For Tree Sizes See Planting Plans. | | | | | |
| ACE PAL | * | Acer palmatum 'Bloodgood' | Japanese Maple | Standard | M |
| ARB MAR | * | Arbutus 'Marina' | Marina Strawberry Tree | | L |
| BAM ALF | * | Bambusa m. 'Alphonse Karr' | 'Alphonse Karr' Bamboo | | M |
| CEM OCC | * | Cercis occidentalis | Western Redbud | Standard | M |
| GIR PHS | * | Gingko Principium Sentry' | Princeton Sentry Gingko (Male) | Standard | M |
| LAG MUS | * | Lagerstroemia 'Muskogee' | Crape Myrtle | Standard | L |
| LAG NAT | * | Lagerstroemia 'Natchez' | Crape Myrtle | Standard | M |
| LAU SAR | * | Laurus nobilis 'Saratoga' | Saratoga Laurel | Standard | M |
| LYO FLO | * | Lyonothamnus floribundus | Catalina Ironwood | Standard | L |
| OLE EUR | * | Olea europaea 'Swan Hill' | Swan Hill Fruitless Olive | Multi | L |
| TRA FOR | * | Trachycarpus fortunei | Windmill Palm | Standard | L |
| TRI CON | * | Tristania conferta | Brisbane Box | Standard | L |
| SYA ROM | * | Syagrus romanzoffiana | Queens Palm | Standard | L |
| PHO CAN | * | Phoenix canariensis | Canary Island Palm | Standard | L |
| QUE AGR | * | Quercus agrifolia | Coast Live Oak | Standard | VL |
| QUE TOM | * | Quercus tomentella | Island Oak | Standard | L |
| SHRUBS/GROUNDCOVERS | | | | | |
| KEY | SIZE | BOTANICAL NAME | COMMON NAME | SPACING | WUCOLS |
| ABG | 5 gal | Anigozanthos 'Bush Gold' | Yellow Kangaroo Paw | 24" oc | L |
| ABR | 5 gal | Anigozanthos 'Big Red' | Red Kangaroo Paw | 24" oc | L |
| ACA | 5 gal | Acacia 'Cousin It' | Little River Wattle | 36" oc | L |
| ACW | 5 gal | Acanthus 'White Water' | Beer's Breech | 36" oc | M |
| ASI | 5 gal | Asparagus 'Sprenger' | Sprenger Asparagus Ferns | 36" o.c. | M |
| ASP | 5 gal | Asparagus d. 'Maye' | Myers Asparagus | 24" oc | M |
| BCK | 1 gal | Benjamina urceolata | Heartbeat sergentia | 24" o.c. | M |
| CAL | 5 gal | Calandrina spectabilis | Rock Purslane | 24" oc | L |
| CDI | 5 gal | Carex divisa | Berkley Sedge | 24" oc | M |
| CEY | 5 gal | Ceanothus 'Yankee Point' | California Lilac 'Yankee Point' | 60" oc | VL |
| CKF | 5 gal | Calamagrostis 'Karl Foerster' | Feather Reed Grass | 36" oc | L |
| COL | 5 gal | Codonema 'Sunset Gold' | Breath of Heaven | 36" o.c. | M |
| CTE | 5 gal | Chondropetalum lectionum (s) | Cape Rush | 36" oc | L |
| DB | 5 gal | Dioses Bicolor 'Orange Drop' | Orange Drop Forsythia Lily | 36" oc | L |
| DJA | 1 gal | Dianella caerulea 'Cassa Blue' | Cassa Blue Flax Lily | 24" o.c. | M |
| DIT | 5 gal | Dianella isanensis 'Variegata' | Variegated Flax Lily | 36" o.c. | M |
| ELG | 5 gal | Eucornus japonicus 'Green Spine' | Green Spine Euonymus | 24" oc | L |
| FEM | 1 gal | Festuca marie' | Adios Fescue | 24" oc | L |
| FES | 1 gal | Festuca glauca 'Elijah Blue' | Elijah Blue Fescue | 18" oc | L |
| HEU | 5 gal | Heuchera 'Wendy' | Wendy Coral Bells | 24" oc | L |
| HYD | 5 gal | Hydrangea macrophylla | Big Leaf Hydrangea | 36" oc | M |
| JPE | 1 gal | Juncus patens 'Elk Blue' | Elk Blue California Gray Rush | 18" oc | L |
| LAV | 5 gal | Lavandula intermedia 'Provence' | Provence French Lavender | 24" oc | L |
| LBB | 1 gal | Liriope m. 'Big Blue' | Big Blue Lily Turf | 18" oc | M |

| | | | | | |
|-----|--------|------------------------------------|--------------------------------|----------|----|
| LIR | 1 gal | Liriope m. 'Variegata' | 'Variegated Lily Turf' | 18" oc | M |
| LOM | 5 gal | Lomandra 'Lime Tuff' | Lime Tuff Lomandra Grass | 30" oc | L |
| LOT | 1 gal | Lotus berthelotii | Parrots Beak | 24" oc | L |
| MAH | 5 gal | Mahonia 'Soft Caress' | Soft Caress Mahonia | 36" o.c. | M |
| MCR | 5 gal | Muhlenbergia c. 'Royal Mist' (s) | Pink Moily | 36" oc | L |
| MRI | 5 gal | Muhlenbergia rigens (s) | Deergass | 36" oc | L |
| NC | 5 gal | Nephrolepis cordifolia | Southern Sword Fern | 36" oc | M |
| NEP | 1 gal | Necola fassettii | Catmint | 24" oc | L |
| OL | 15 gal | Olea c. 'Little Olive' | Dwarf Olive | 60" oc | VL |
| PD | 5 gal | Phomium 'Dusty Chief' | Dusty Chief Flax | 42" oc | L |
| PR | 5 gal | Phomium 'Rainbow Queen' | Rainbow Queen Flax | 36" oc | L |
| PEL | 5 gal | Pennisetum a. 'Little Bunny' | Little Bunny Fountain Grass | 24" oc | L |
| PEN | 5 gal | Pennisetum a. 'Hameln' | Hameln Fountain Grass | 36" oc | L |
| PHG | 5 gal | Phomium 'Tiny Tiger' | Tiny Tiger Flax | 18" o.c. | L |
| PHL | 5 gal | Phomis russellana | Jerusalem sage | 30" o.c. | L |
| PIG | 5 gal | Pitosporum tobira 'Shina' | Creme de Mint Pitosporum | 30" o.c. | M |
| PII | 15 gal | Pitosporum 'Silver Sheen' | Silver Sheen Kohuhu | 60" o.c. | M |
| RGP | 5 gal | Rhaphiolepis x d. 'Georgia Petite' | Georgia Petite Indian Hawthorn | 36" o.c. | L |
| RH | 5 gal | Rhamnus californica 'Eve Case' | Eve Case Coffeeberry | 48" oc | L |
| RT | 5 gal | Rosmarinus 'Tuscan Blue' | Tuscan Blue Rosemary | 36" oc | L |
| ROH | 1 gal | Rosmarinus 'Huntington Carpet' | Huntington Carpet Rosemary | 30" o.c. | L |
| ROP | 1 gal | Rosmarinus prostratus | Trailing Rosemary | 24" oc | L |
| SAL | 5 gal | Salvia 'Dara's Choice' | Dara's Choice Sage | 36" o.c. | L |
| SR | 15 gal | Streptocarpus reginae | Bird of Paradise | 36" oc | M |
| SLB | 5 gal | Salvia leucantha 'Santa Barbara' | Mexican Sage | 36" oc | L |
| TEU | 1 gal | Taxodium x bicolora | Germanier | 24" o.c. | L |
| TJA | 1 gal | Trachelospermum jasminoides | Star Jasmine | 36" o.c. | M |

STORMWATER TREATMENT PLANT LEGEND

| KEY | SIZE | BOTANICAL NAME | COMMON NAME | SPACING WUCOLS | BASIN | BANK | UPLAND |
|-----|-------|--------------------------|-----------------|----------------|-------|------|--------|
| CTE | 5 Gal | Chondropetalum lectionum | Small Cape Rush | 36" O.C. | L | ■ | ■ |
| MRI | 5 Gal | Muhlenbergia rigens | Deer Grass | 36" O.C. | L | ■ | ■ |

**NOTE: The above plants have been selected as being representative of the overall planting design intent. This plant palette is suggested for use, but does not predetermine use of other appropriate plant material. Water-conserving plants and other climate appropriate varieties of trees, shrubs and ground covers have been selected to complement the character of the project.

All planted areas are to be watered

with an approved automatic underground irrigation system. The system shall be designed to make efficient use of water through conservation techniques, and be in compliance with the State and Water District's water conservation ordinances.

The final construction documents will provide the contractor with an understanding of the design intent for the maintenance of the planting areas regarding care and pruning of the site. The maintenance contractor shall furnish all labor, equipment, materials and supervision required to properly maintain the landscaped areas in an attractive condition and as described in the project maintenance specifications.



1855 S. NORFOLK ST

PLANTING NOTES & LEGENDS

L-5.2

1855 S. NORFOLK ST

MARCH 30, 2023

All drawings and related material appearing herein constitute original, and copyrighted work of the architect and may not be duplicated, used, or distributed without the written consent of the architect.