



Bicycle and Pedestrian Program Update

September 13, 2023

Nicolette Chan
Associate Transportation Planner

Sue-Ellen Atkinson
Principal Transportation Planner

OVERVIEW

- Infrastructure Projects
- Planning Projects
- Grants

Infrastructure Projects

Delaware Street Safe Routes to School Corridor

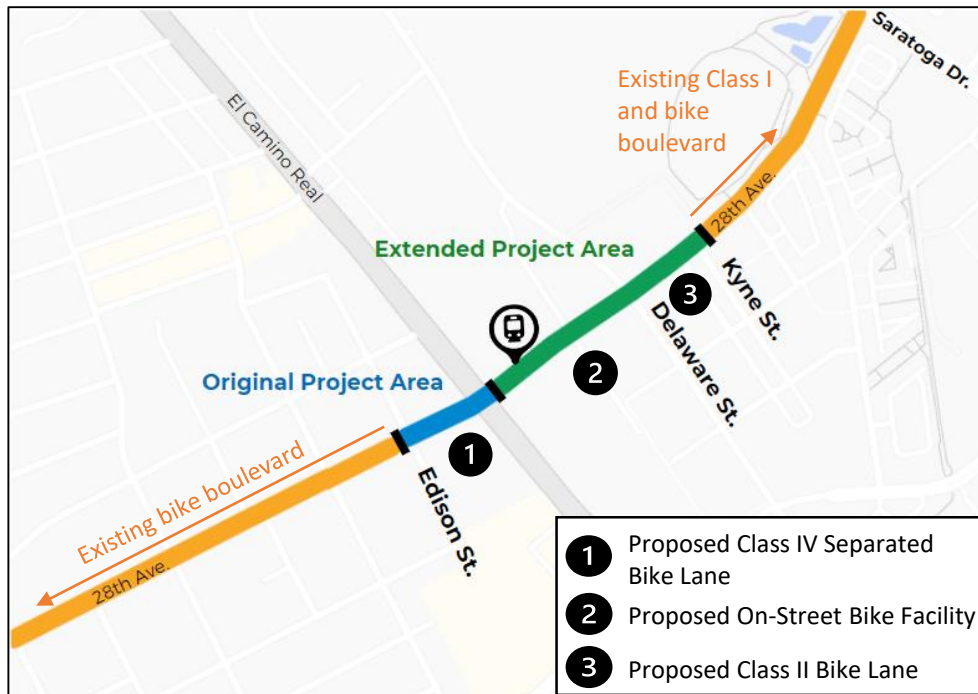
- Scope: 19th Avenue to Pacific Boulevard
- Design and construction of a Class IV separated bike lane and bicycle boulevard
- Total grant funding: \$1.66M
- Status:
 - Request for Proposal for design and construction was released September 7
 - Proposals due October 5
 - Staff will interview teams



Infrastructure Projects

28th Avenue Gap Closure Project

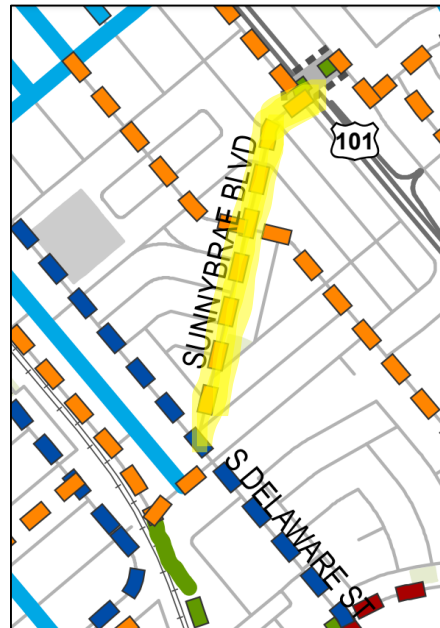
- Design and environmental review for bicycle and pedestrian connectivity
- Revised Scope: Edison Street to E. Kyne Street
- Status:
 - Revising engagement plan and conceptual designs for expanded scope
 - Upcoming Outreach
 - Nov. 2023 - Community Meeting
 - Winter 2023 - Sustainability and Infrastructure Commission



Infrastructure Projects

Smooth Streets Phase 3

- Class III Bike Boulevard
- Scope: Delaware St. to S. Amphlett Blvd.
- Traffic calming and pedestrian improvements
- Status:
 - Community Meeting held on July 29
 - Bicycle improvement striping expected Winter 2023



SUNNYBRAE NEIGHBORHOOD

COMMUNITY MEETING

Receive an informational update on the **Road Reconstruction within the Sunnybrae Neighborhood** and have your questions answered by City staff.

We will also discuss the **striping/sign improvements at the Folkstone Ave. and Sunnybrae Blvd. intersection** and any other resident concerns.

 Sunnybrae Park
626 Folkstone Avenue
San Mateo, CA 94402

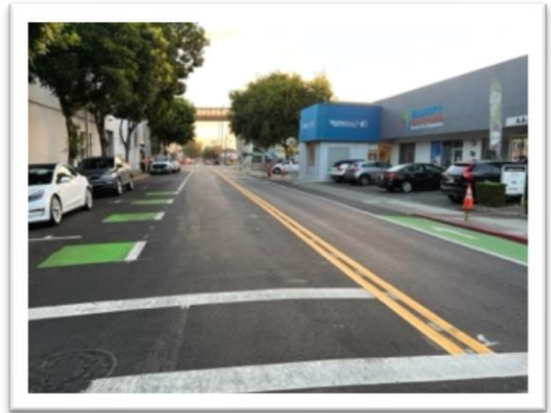
 Saturday, July 29, 2023
10:00AM

Hosted by the Public Works Department
(650) 522-7300
Publicworks@cityofsanmateo.org

Infrastructure Projects

4th and 5th Railroad Crossing Improvement

- Class II Bike Lane on 5th Avenue
- Scope: B Street to Railroad Avenue
- Status:
 - In Progress – Majority of bike lane striping and signage completed
 - Anticipated completion in October/November 2023



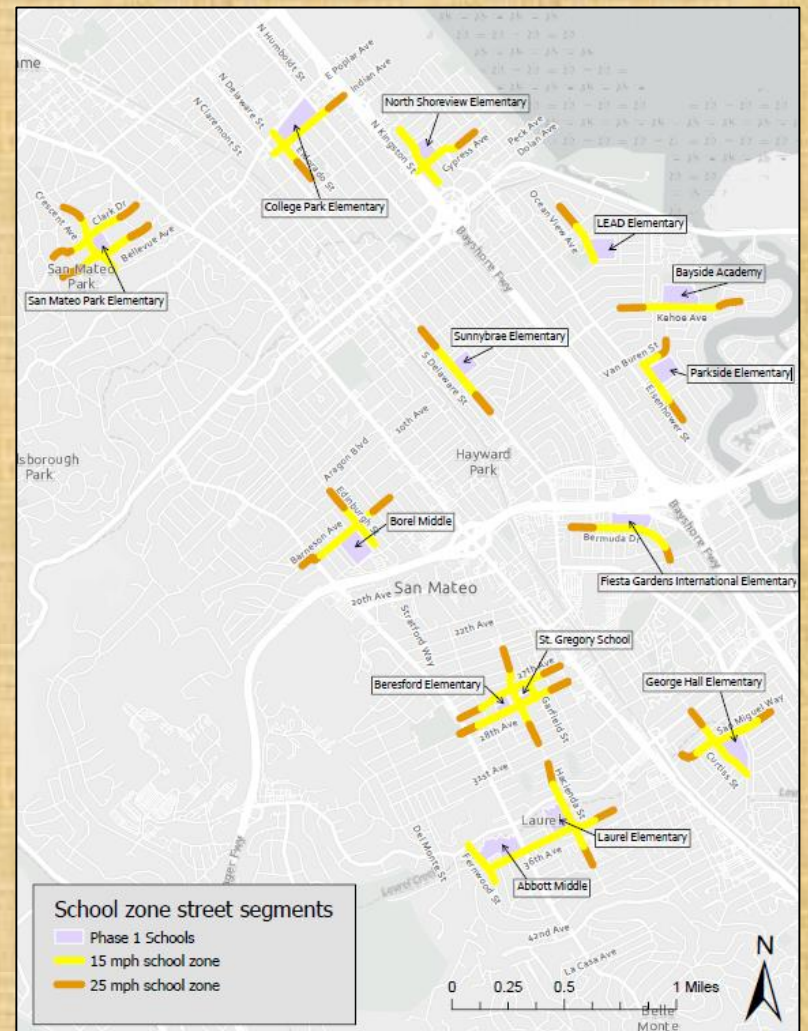
School Zone Speed Limits

- Implementation of reduced speed limits in qualifying school zones
 - 15 mph within 500 feet of school
 - 25 mph between 500-1000 feet
- Status of Phases
 - Phase 1: Public elementary and middle schools (Complete)
 - Phase 2: Public high schools (In design)
 - Phase 3: Private schools (In design)



Map of Phase 1 Locations

www.cityofsanmateo.org/SlowforStudents



School Zone Speed Limits Outreach



200+ Yard Signs
(English and Spanish)



News Coverage
(San Mateo Daily Journal, KRON 4,
Telemundo)



Dynamic Message Signs



City Social Media Channels

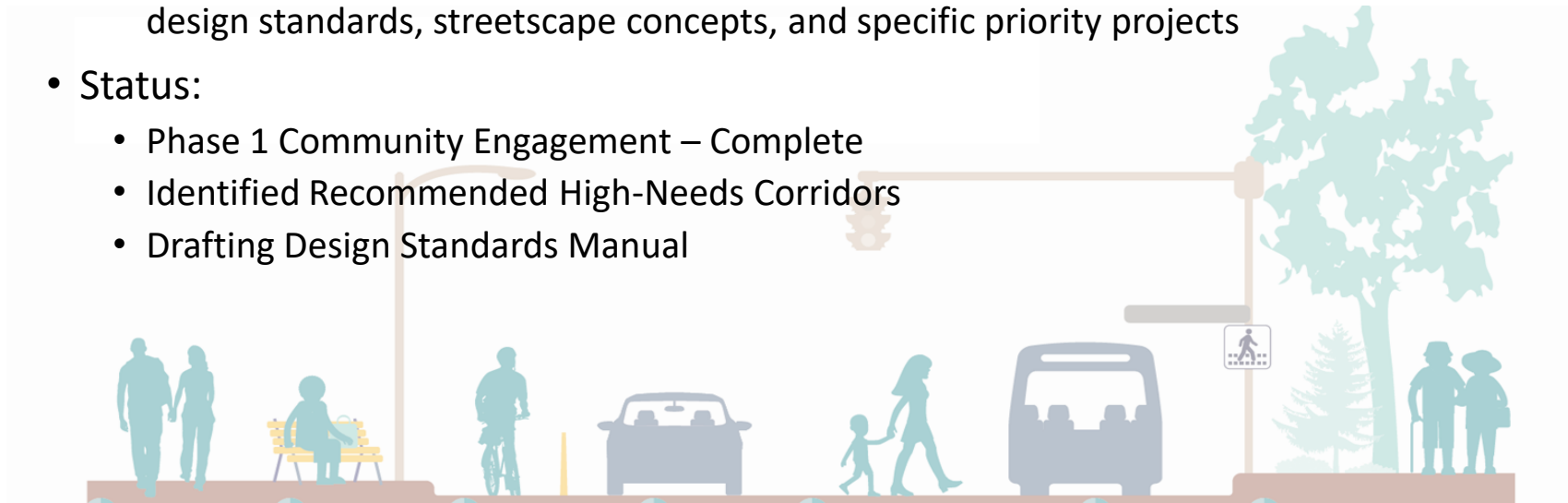
- # Smart Corridor?
- 
- Smart Corridor** is a street that uses tech to integrate enhanced features to improve travel experiences for people walking, biking, scooting, taking transit, and driving. Anchored by the Mobility Hub, the Smart Corridor will connect Mission Bay and the Caltrain Market Station along 14th Avenue and Fashion Island Boulevard.
- ## CORE FEATURES
- Bus lanes with transit priority and off-peak carpooling
 - Public transit with co-scheduling
 - Stops with real-time arrival and departure
 - Public Wi-Fi
 - Connected mobility that allows for real-time vehicle location
 - Traffic and safety monitoring
- ## OPTIONAL FEATURES
- Microtransit
 - Light rail or other transit
 - Public transit
 - Commuter parking with storage
 - Co-scheduling
 - Delivery lockers
 - Microtransit
 - Mobile device with real-time arrival and departure
- CLASS IV SEPARATED BIKEWAY**
- In addition to the Smart Corridor features, a **Class IV separated bikeway** will also be included along the corridor. Class IV bikeways are known as separated bike lanes, are on-road bikeways that are physically separated from vehicle travel by barriers such as bollards, curbs, or planters.
- What is a Mobility Hub?**
- Mobility hubs** provide integrated mobility solutions, and technologies to make it
- ## POTENTIAL FEATURES
- ### Transit and Trip-Making Services
- Public transit
 - Microtransit
 - Bus lane
 - Light rail
 - Commuter parking
- ### Parking and Charging Services
- Public transit
 - Microtransit
 - Bus lane
 - Light rail
 - Commuter parking

Planning Projects

Planning Projects

San Mateo Complete Streets Plan

- New, comprehensive multimodal plan
 - Combines Pedestrian Master Plan, Bicycle Master Plan, Sustainable Streets Plan, Green Infrastructure Plan
 - Supports General Plan 2040 with projects that focus on safety for all modes, including design standards, streetscape concepts, and specific priority projects
- Status:
 - Phase 1 Community Engagement – Complete
 - Identified Recommended High-Needs Corridors
 - Drafting Design Standards Manual



Planning Projects

San Mateo Complete Streets Plan



Planning Projects

San Mateo Complete Streets Plan



Finalizing Needs Assessment based on community feedback



Developing Draft Policies and Design Guidelines and Identifying High Need Corridors



Update to the Sustainability and Infrastructure Commission and City Council in October 2023



Planning Projects

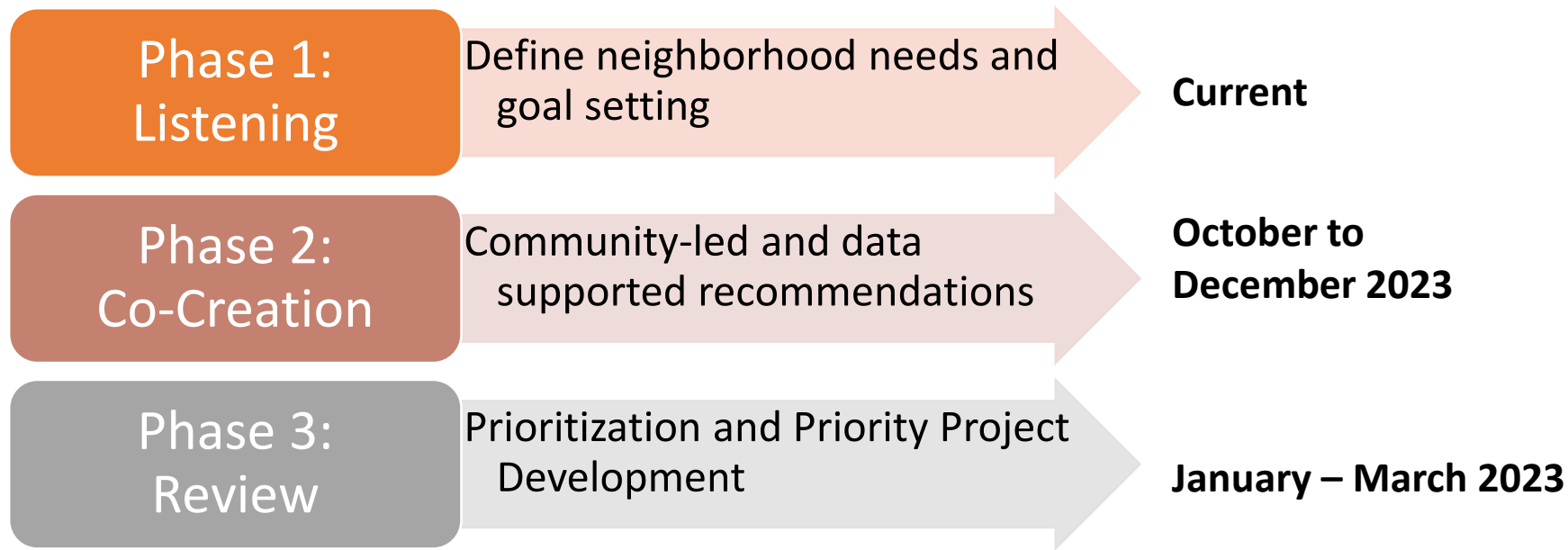
Complete Streets North Central Plan

- Focused transportation planning document for North Central
- Understand the lived experience and identify transportation needs and goals
- Status:
 - Outreached at National Night Out on August 1
 - Conducting stakeholder interviews with neighborhood leaders
 - First Lived Experience Group Meeting scheduled for October 2023



Complete Streets North Central Plan

Community Engagement Phases



Planning Projects

Citywide Transportation Demand Management (TDM) Ordinance

- Comprehensive approach to transportation demand management by recommending trip reduction goals throughout the City
- Funded by MTC technical assistance grant
- Total Project Cost: \$150,000
- Status:
 - Completed the first round of community engagement (focus group meetings)
 - Finalizing TDM Measures List
 - Developing draft TDM Policy Framework and compliance and monitoring requirements



Planning Projects

Local Road Safety Plan (LRSP)

- Analyze collision patterns in the City to recommend prioritized safety improvements
- Required for Caltrans funding eligibility
- Status
 - Community Engagement conducted during Summer 2023
 - Pop-ups, online mapping activity, A-frames
 - Update to Sustainability and Infrastructure Commission in Fall 2023



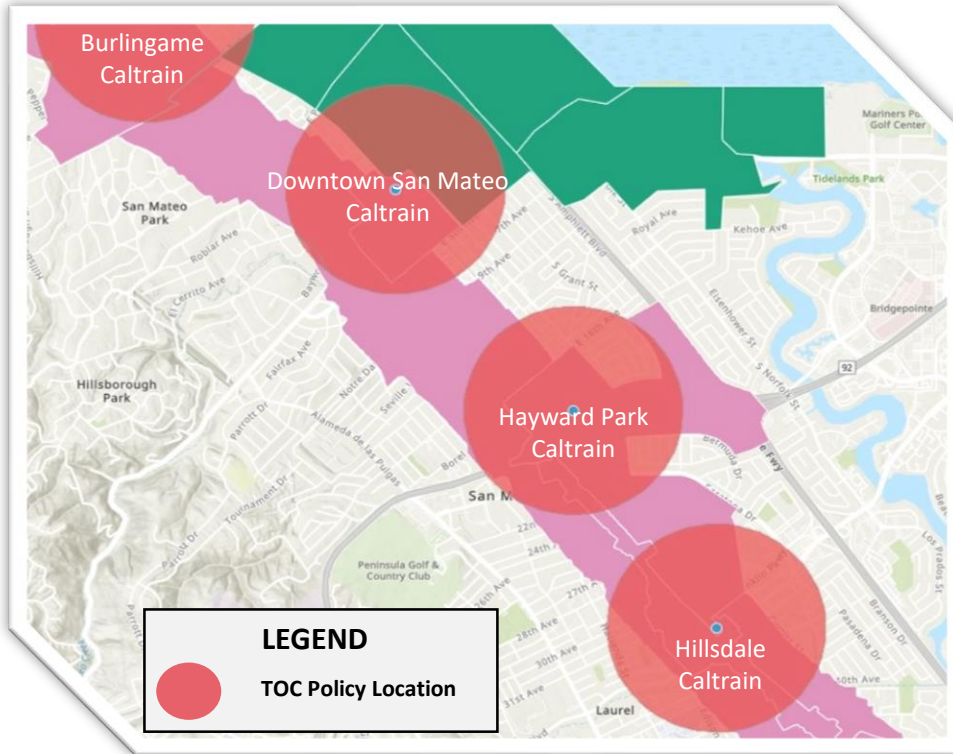
Grant Update

MTC Parking Management Grant

- Staff submitted grant application to:
 1. Align parking requirements with MTC Transit-Oriented Communities (TOC) Policy,
 2. Evaluate parking requirements outside of TOC policy areas, and
 3. Update zoning codes related to parking.
- MTC recommended the project for full funding in July 2023
- Notice to Proceed expected in Fall 2023

MTC Transit-Oriented Communities Policy

Tier 3 Parking Management Requirements



- No parking minimums
- Establish parking maximums
- Requires secured bicycle parking
- Requires shared parking between uses

Thank You

Nicolette Chan

nchan@cityofsanmateo.org

650-522-7326

Sue-Ellen Atkinson

seatkinson@cityofsanmateo.org

650-522-7288

www.cityofsanmateo.org/publicworks

MTC Transit-Oriented Communities Policy

Overview

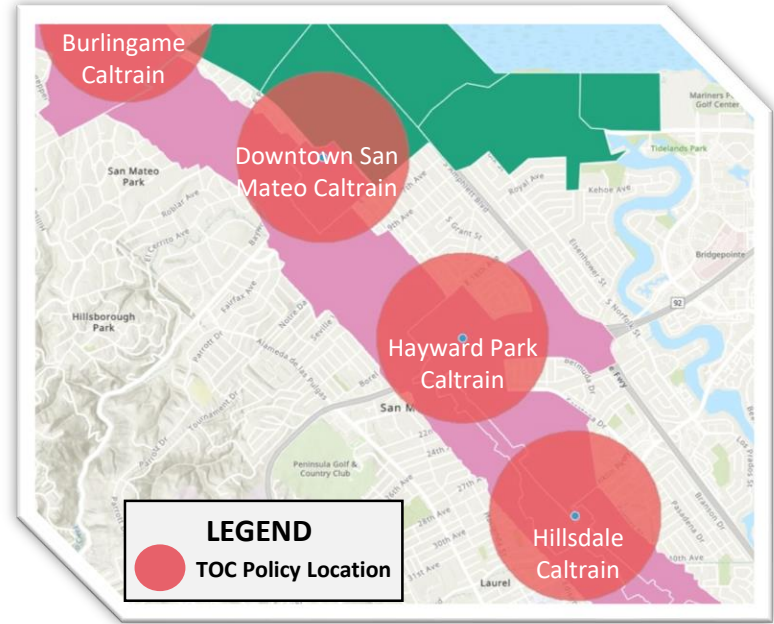
- Requirements for density, affordable housing, parking management, and transit station access
 - Grant Scope – Compliance with parking management requirements
- Requirements based on Transit Tier
 - Tier 1: Rail stations
 - Tier 2: Stop/station served by 2 or more BART lines or BART and Caltrain
 - **Tier 3: Stop/station served by one transit service**
 - Tier 4: Commuter Rail stations, Caltrain stations south of Tamien, or ferry terminals



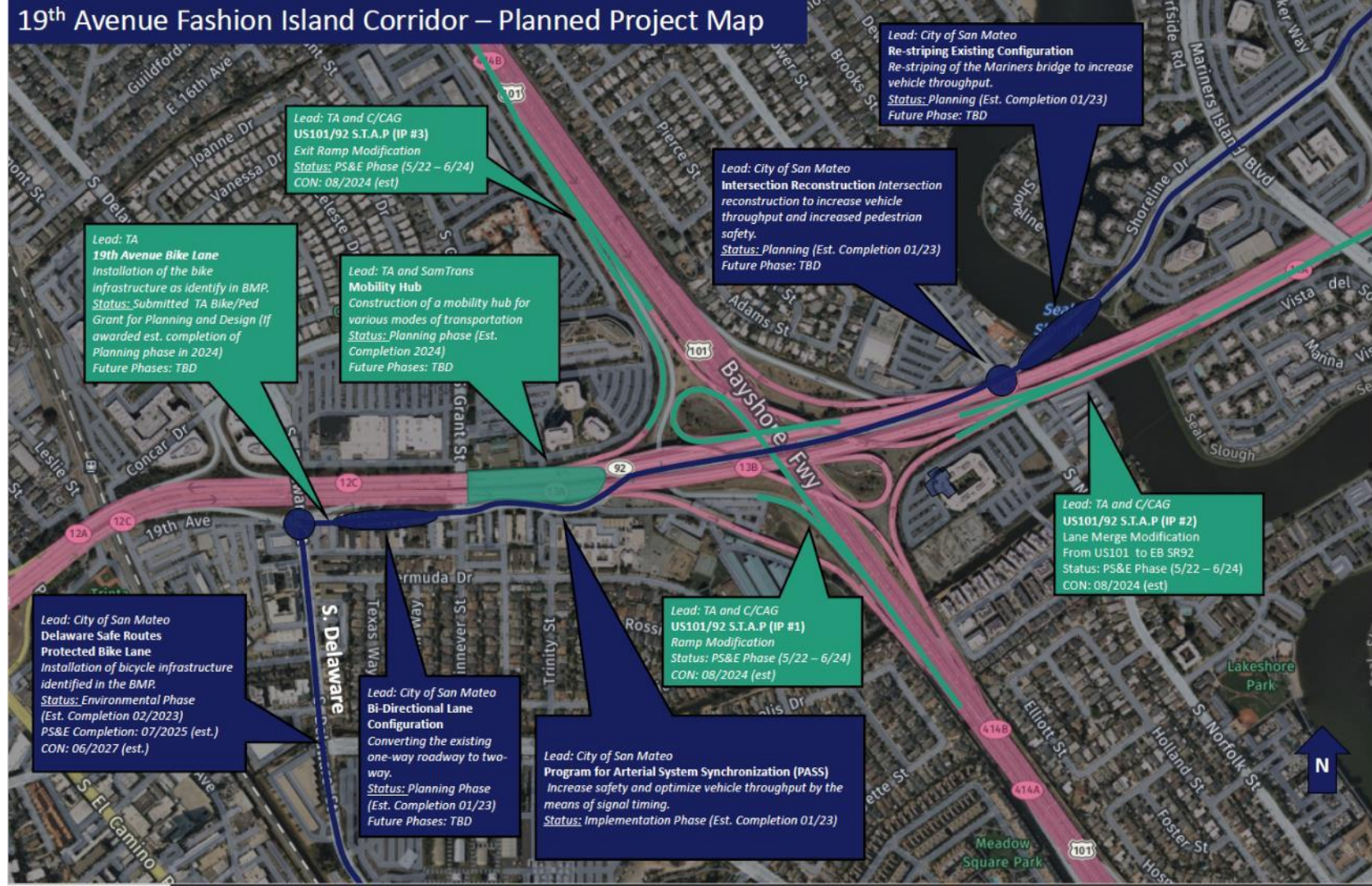
MTC Transit-Oriented Communities Policy

Tier 3 Parking Management Requirements

- Allow unbundled parking and shared parking between different land uses
- New Residential Developments
 - No minimum parking requirement
 - Parking Maximum of 1.0 spaces per unit or lower
 - 1 secured bicycle parking space per unit
- New Commercial Development
 - No minimum parking requirement
 - Parking Maximum of 2.5 spaces per 1,000 square feet or lower
 - 1 secured bicycle parking space per 5,000 square feet



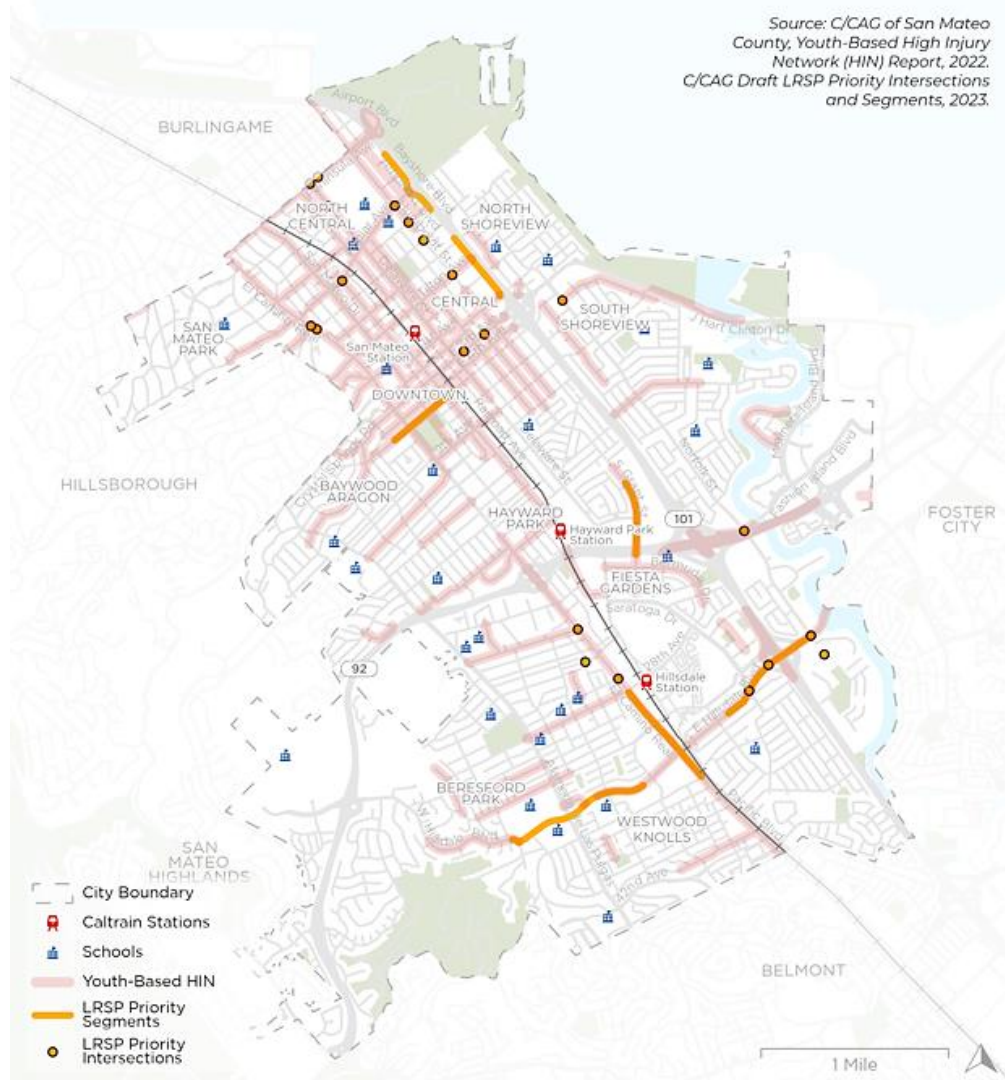
19th Avenue Fashion Island Corridor – Planned Project Map



High Injury Network

This map shows where fatal and severe pedestrian, bicycle, and automobile injury collisions; youth collisions; and active injury collisions occurred.

Includes LRSP priority intersections and segments.



Infrastructure Projects Completed Since 2020

- 5th Avenue Bicycle Facilities
- 28th Avenue Bicycle Boulevard
- 28th Avenue Shared Use Path
- North Central Bike Lanes
- North San Mateo Drive Bike Lane
- Laurie Meadows Buffered Bike Lane
- South Humboldt Street Bike Lane
- Pacific Avenue Bike Lane

