



Public Restrooms in Downtown

Evan Albert

Deputy Director of Public Works


Public Works Department

AGENDA

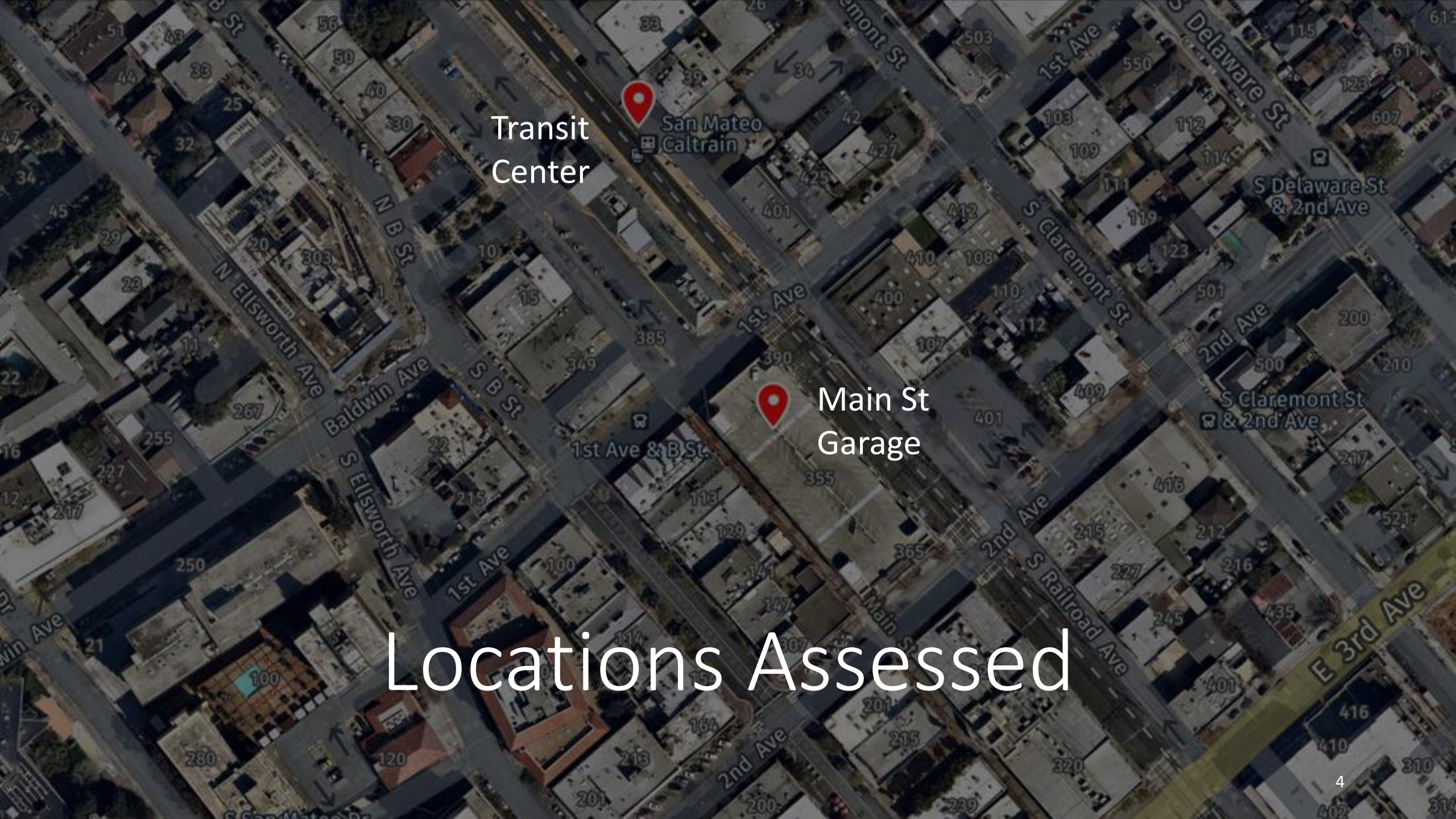
- Council Priority
- Locations Assessed
- Improvements Needed
- Cost Estimates
- Challenges
- Council Input

Council Priority to Open a public Restroom in Downtown

FY22-23 Council Objective



Identify options to open a restroom within City Facilities in the Downtown to the public including evaluating costs to clean and maintain and safety and security



Transit
Center

Main St
Garage

Locations Assessed

Transit Center San Mateo Caltrain Station

Two platform level
restrooms

Currently closed, not
maintained, and no
signs



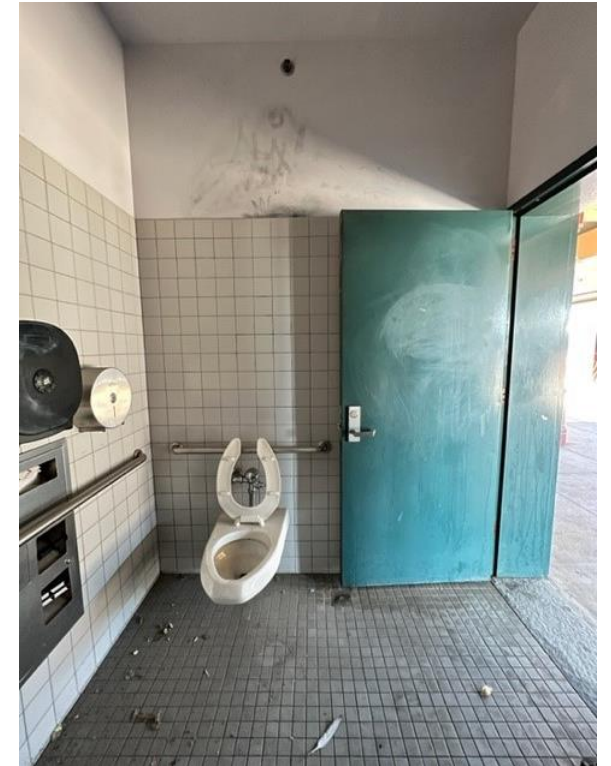
Transit Center

Existing Conditions Assessment

Two single occupancy restrooms at the platform level.

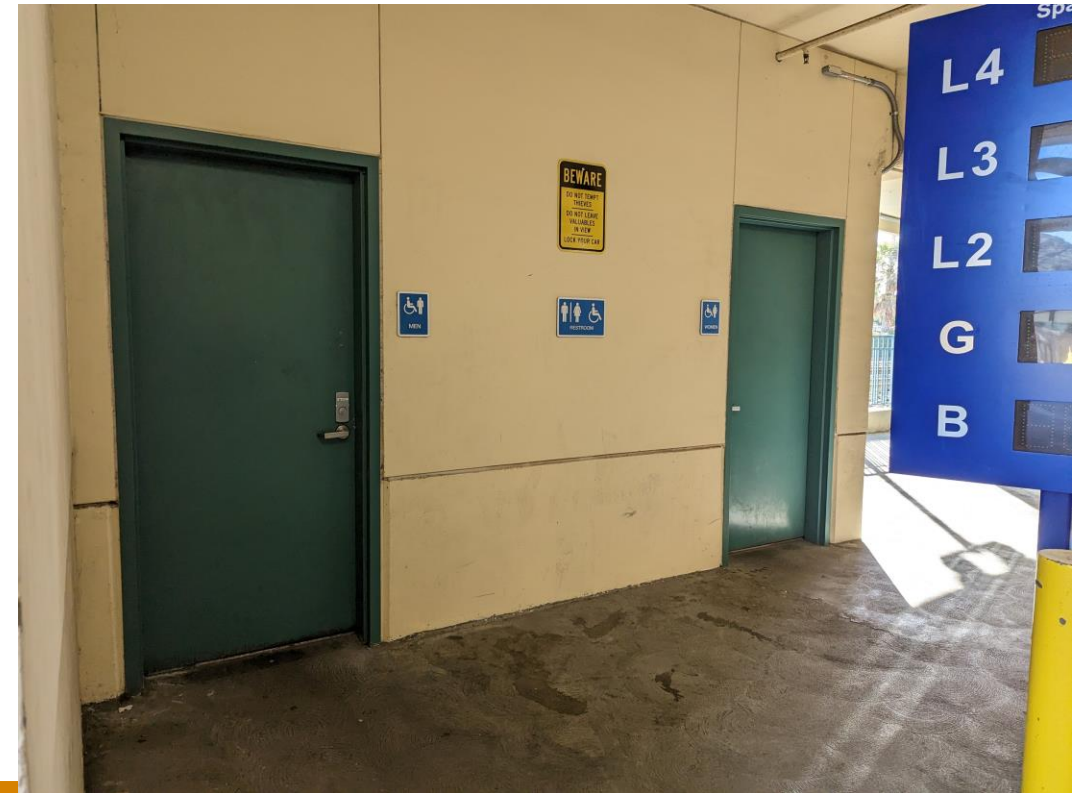
Deficiencies:

- Heights and reach of existing fixtures need to be modified
- Door modifications to correct swing requirements outward
- Lighting improvements to include auto-on/off
- Needs new signage



Main Street Parking Garage - 2 Street Level Restrooms

Status: Currently locked and available for downtown business workers and Police Department substation by key



Main Street Parking Garage

Existing Conditions Assessment

Two single occupancy restrooms facilities at the street level of parking garage.

Deficiencies:

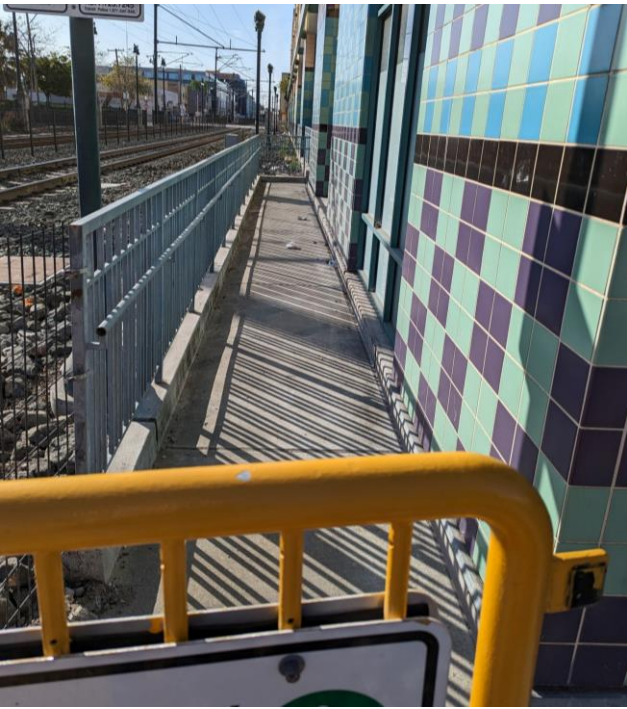
- Door modifications to correct swing requirements outward
- Needs new signage
- Path of travel exists from the accessible parking stalls along Main Street, along 1st Avenue and along the Caltrain right-of-way do not meet current slope requirements





Main Street Garage Path of Travel Deficiencies

Repaving/re-sloping the path
of travel along Main Street and
the sidewalk along 1st Avenue



Cost Estimates for Minimum Improvements



LOCATION	ESTIMATED COST
Transit Center	\$90,000
Main Street Parking Garage	\$100,000
ADDITIONAL ITEMS:	
Cleaning and Maintenance (daily)	\$1,500/month per location *Note – this is for one cleaning per day only
Security Camera	\$15,000

Challenges

- Graffiti
- Drug use
- Maintenance and cleaning
- Well-lit area
- Security – Police Department feedback
 - Location that has high foot traffic
 - Installation of security cameras to monitor safety



Council Input:

- Confirm proceeding with opening a public restroom downtown
- Preferred location
- Hours of operation, e.g., 24/7 or limited hours
 - Parks & Recreation public restrooms are typically open from 7am-9pm
- Funding source: General Fund

Thank You

Evan Albert

Deputy Director of Public Works

ealbert@cityofsanmateo.org