



Parks and  
Recreation  
Commission  
Meeting 03/02

# East Hillsdale Park today



# 2020 Community Survey



## EAST HILLSDALE PARK PLAY AREA UPGRADE PROJECT NEIGHBORHOOD SURVEY

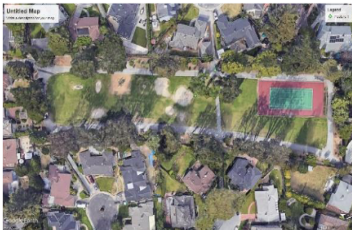
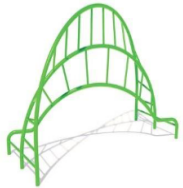
Dear Neighbor:

The City has budgeted \$600,000 of funds to begin the planning process to upgrade the play space within East Hillsdale Park along with some related enhancements (i.e. benches, picnic area, etc.).

We would like to obtain input from the neighborhood as to any ideas for the play area space and related enhancements. As you may know West Hillsdale Park includes a play area in basically one location and has a larger open lawn area for free play. The City does not permit out this lawn area to sports groups; however, like our experience in most other parks, the turf area does get drop-in practice use from sports groups, mostly youth from the surrounding neighborhood.

We are also interested in knowing if you have other ideas for the park in terms of park amenities and the park's design for the future as this may affect the design and location of the play space on which we are about to embark.

Please complete the on-line survey by Monday, February 17, 2020 by going to: [www.opentownhall.com/8226](http://www.opentownhall.com/8226)



- 1000 mailers sent out
- 94 responses
- Identified preferred location of play area
- Separate play area for older kids and younger kids
- Replace with similar play elements as existing

# October 21 Virtual Outreach



- Presented several playground design options
- Focused on play area improvements
- Included small group picnic areas, shade structures etc.
- General consensus was that the options were “over designed” for such a small park
- Comments suggested the need for other park upgrades, i.e. drainage, irrigation and pathway improvements etc.

# January 22<sup>nd</sup> In person outreach



- “Less is more”
- Address more than just the playground
- Tree plan
- Drainage
- Walking Path
- No restrooms

To 31<sup>st</sup> Avenue

Arbor Lane

Arrowood Lane

Hickory Lane

Briar Lane

Chestnut Lane

To Louise Lane



# Options Presented -Spec Play



# Options Presented –Spec Play





Options Presented  
–HAGS



# Options Presented –HAGS



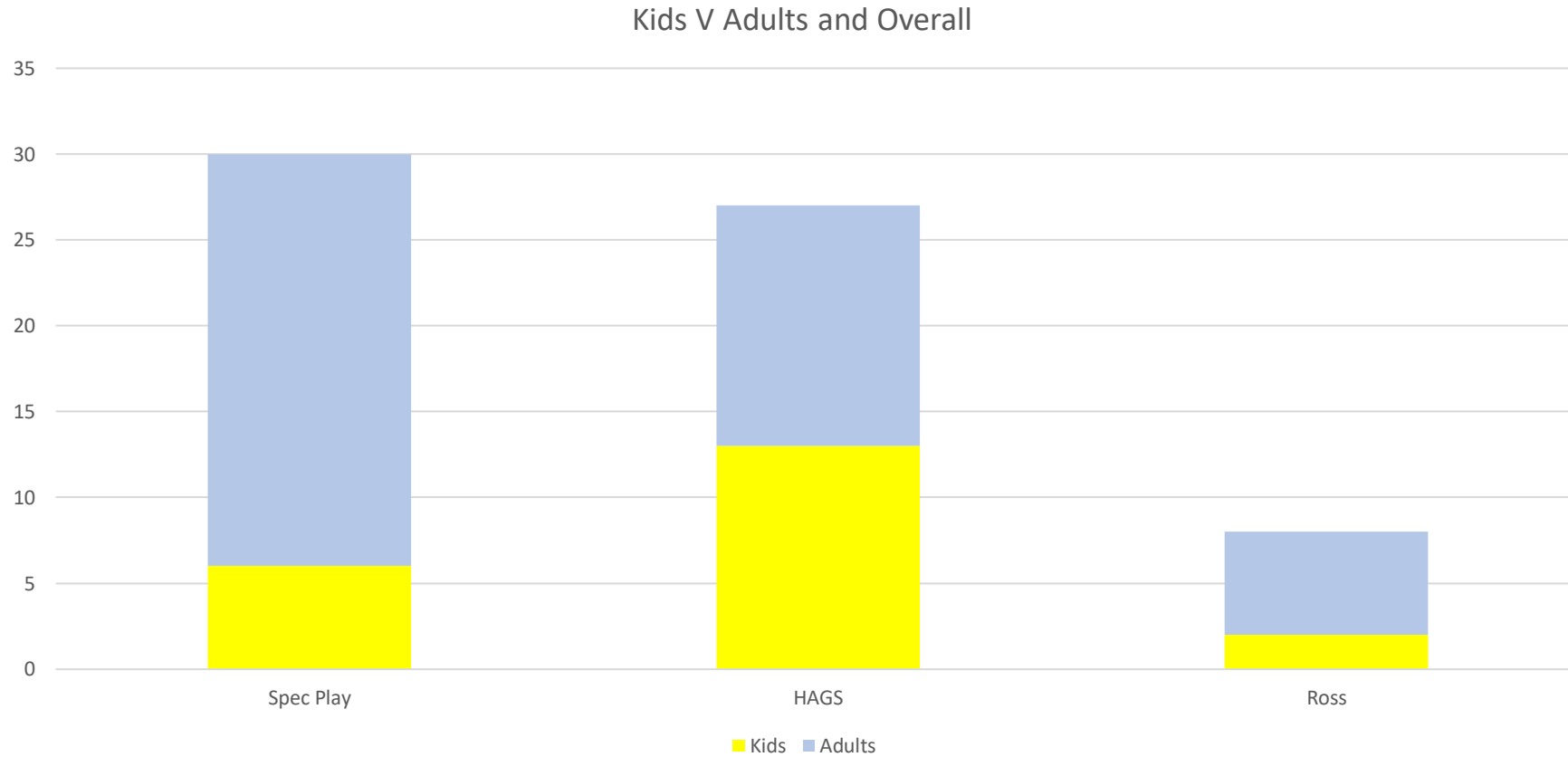
# Options Presented -Ross



# Options Presented -Ross



# Voting and breakdown of votes





Questions?



# Fee Schedule Updates

- Minor fee increases to certain picnic areas
- Recreation – New Facility rentals fees
  - A set of new fees for commercial use of facilities by leagues, camps or organizations
  - King Gymnasium, 1 new fee consolidating 2 complimentary fees for use of the gymnasium
- Parks – Temp Park Access Fee
  - New fee (\$100) for any 3rd party that needs to access a City park to carry out work on private property or equipment
- Golf-Minor adjustments to certain player categories
- No changes to Park In Lieu Fees due to ongoing study

# Round 1 Designs



# Round 1 Designs



# Round 1 Designs



# Round 1 Designs

