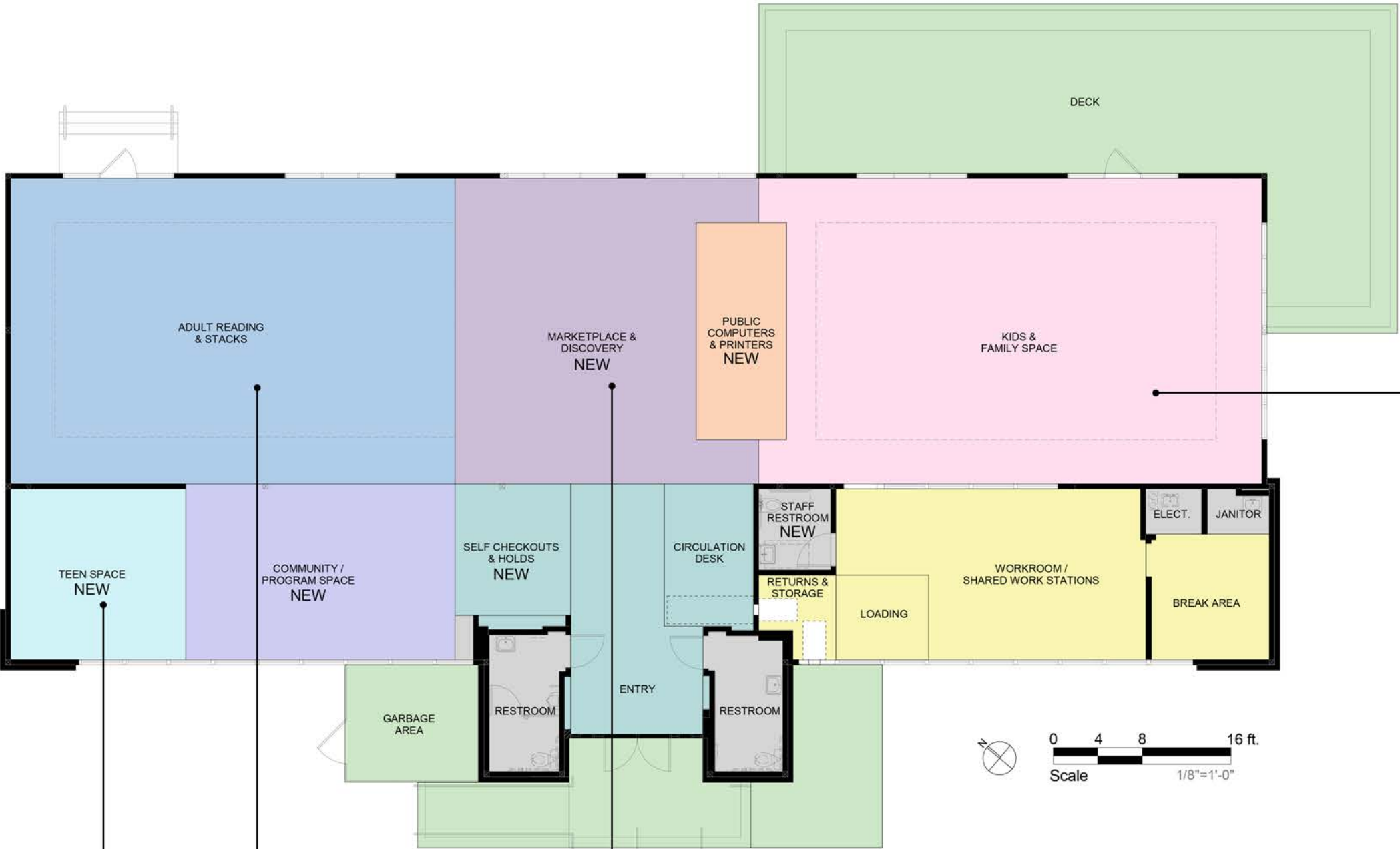


INTERIOR PROGRAM AREAS		EXISTING 5050 SF
ENTRY, SELF CHECK & CIRCULATION	410 SF	
MARKETPLACE & DISCOVERY	315 SF	
PUBLIC COMPUTERS & PRINTERS	434 SF	
KIDS & FAMILY SPACE	993 SF	
TEEN SPACE	80 SF	
ADULT READING & STACKS	1710 SF	
COMMUNITY/PROGRAM SPACE	220 SF	
WORKROOM & BREAK AREA	620 SF	
RETURNS, STORAGE & LOADING	40 SF	
RESTROOMS & UTILITIES	228 SF	
EXTERIOR PROGRAM AREAS		1433 SF
ENTRY & LOADING AREA	256 SF	
GARBAGE AREA	127 SF	
DECK & REAR STAIRS	1050 SF	

EXISTING

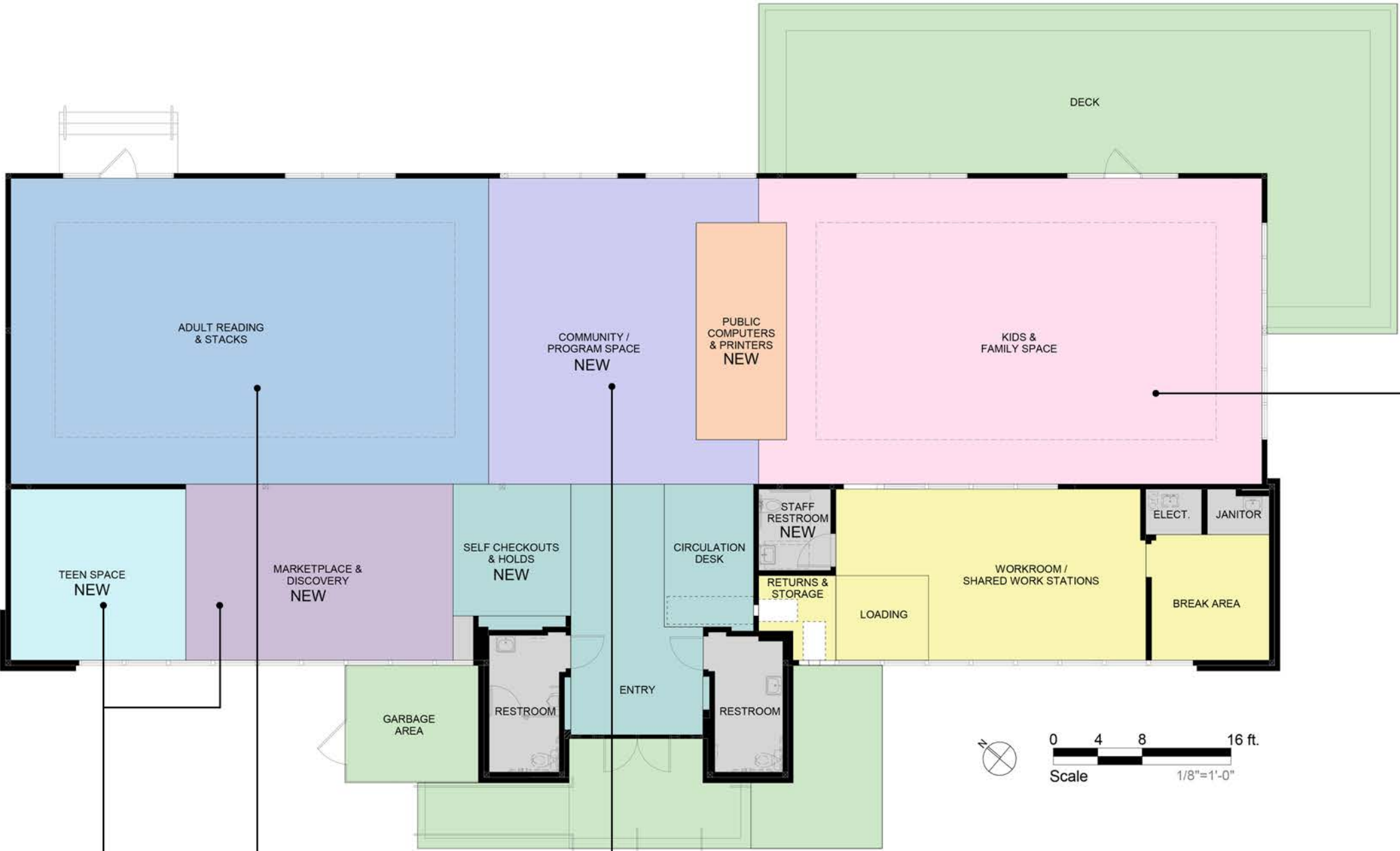




INTERIOR PROGRAM AREAS	EXISTING	PROPOSED
	5050 SF	5050 SF
ENTRY, SELF CHECK & CIRCULATION	410 SF	465 SF
MARKETPLACE & DISCOVERY	315 SF	650 SF
PUBLIC COMPUTERS & PRINTERS	434 SF	159 SF
KIDS & FAMILY SPACE	993 SF	1200 SF
TEEN SPACE	80 SF	250 SF
ADULT READING & STACKS	1710 SF	1100 SF
COMMUNITY/PROGRAM SPACE	220 SF	370 SF
WORKROOM & BREAK AREA	620 SF	495 SF
RETURNS, STORAGE & LOADING	40 SF	105 SF
RESTROOMS & UTILITIES	228 SF	256 SF
EXTERIOR PROGRAM AREAS	1433 SF	1557 SF
ENTRY & LOADING AREA	256 SF	380 SF
GARBAGE AREA	127 SF	127 SF
DECK & REAR STAIRS	1050 SF	1050 SF

OPTION 1





INTERIOR PROGRAM AREAS	EXISTING	PROPOSED
	5050 SF	5050 SF
ENTRY, SELF CHECK & CIRCULATION	410 SF	465 SF
MARKETPLACE & DISCOVERY	315 SF	380 SF
PUBLIC COMPUTERS & PRINTERS	434 SF	159 SF
KIDS & FAMILY SPACE	993 SF	1200 SF
TEEN SPACE	80 SF	250 SF
ADULT READING & STACKS	1710 SF	1180 SF
COMMUNITY/PROGRAM SPACE	220 SF	560 SF
WORKROOM & BREAK AREA	620 SF	495 SF
RETURNS, STORAGE & LOADING	40 SF	105 SF
RESTROOMS & UTILITIES	228 SF	256 SF
EXTERIOR PROGRAM AREAS	1433 SF	1557 SF
ENTRY & LOADING AREA	256 SF	380 SF
GARBAGE AREA	127 SF	127 SF
DECK & REAR STAIRS	1050 SF	1050 SF

OPTION 2



MARINA PUBLIC LIBRARY

Architecture Spatial Program - Preliminary Option 1

1/31/2024

PROGRAM AREAS - INTERIOR SPACES

	Present Area sqft	Needed/Proposed Area sqft	Notes/Reasoning
1. ENTRY AND SERVICE POINT	410	465	Relocate outdoor book drop; update door and security to comply with accessibility standards; use adjustable shelving for holds; mobile shelving for display; circulation desk stays in existing location with built-in book drop.
 Entry	175	215	
Circulation Desk	170	110	
Self Checkouts (express stations) and Holds	50	125	
Materials Display	15	15	
2. MARKETPLACE & DISCOVERY	315	650	Option 1 on axis with the entry, sharing the view and natural light; relocate miscellaneous pamphlets and flyers here. Include media here? Good place for periodicals?
 Display shelving (face display) or gondolas for new materials (retail model), flexible seating areas.			
3. PUBLIC COMPUTERS & PRINTERS	434	159	Reduce from 12 to 6 computers; place all printers and copier here; eliminates extra circulation space.
 Public computers	390	115	
Printers (2)	14	14	
3D printer	15	15	
Copier	15	15	
4. KIDS & FAMILY SPACE	993	1200	Keep in the same area, defined; remove adult and teen materials; create easy flex space for children's programs.
 Kids collection and display, parent-child interactions, early literacy for preschoolers, spaces for school-age kids, child appropriate technology.			
5. TEEN SPACE	80	250	Dedicated room where study room now is; remove wall facing circ area; Option 1 shows integration with community program space.
 Interactive creative area, social seating/furnishings, collaborative work, learning spaces, collection displays and some of the teen collection, young adult literature collection.			
6. ADULT READING & STACKS	1710	1100	Reduction of media, audiobooks, etc; fewer non-fiction books; preference for travel and contemporary/popular fiction. Quantity of foreign language media?
 Adult book stacks, reading and contemplative spaces.			
7. COMMUNITY/PROGRAM SPACE	220	370	Include a wall of materials along exterior wall for display, possible periodicals and media here? AND/OR: spill over from Adult reading on movable shelves. (see notes at Marketplace). Tables, easily movable furniture.
 Flexible/modular spaces, movable tables. STEM space, creative craft spaces, flexible storage/display of: tools, technology, equipment, adaptable workspace.			
8. OPERATIONS	660	600	New code-compliant restroom in new location. New book exterior drop directly into workroom, next to new loading door. 3 work stations--2 dedicated and 1 floating. Storage for program materials and office supplies. Janitorial unchanged.
 Workroom/shared workstations	500	375	
Break area with staff kitchen	120	120	
Book returns/dops	25	15	
Media returns/drops	15	0	
Loading	0	55	
Storage	0	35	
9. BUILDING SERVICES	228	256	Includes new accessible staff restroom in workroom.
 Restrooms/drinking fountain	188	216	
Janitor	20	20	
Mechanical/Electrical/IT	20	20	
TOTAL BUILDING AREA	5050	5050	

PROGRAM AREAS - EXTERIOR SPACES		Present Area sqft	Present Area sqft	Notes/Reasoning
10. ENTRY				Entry ramp expanded for public book drop and compliant loading door.
	Entry area and ramp	213	337	
	Loading ramp	43	43	
	Garbage area	127	127	
11. DECK				No change until status of easement is resolved.
	Deck	1050	1050	
TOTAL EXTERIOR AREA		1433	1557	

MARINA PUBLIC LIBRARY

Architecture Spatial Program - Preliminary Option 2

1/31/2024

PROGRAM AREAS - INTERIOR SPACES

	Present Area sqft	Needed/Proposed Area sqft	Notes/Reasoning
1. ENTRY AND SERVICE POINT	410	465	Relocate outdoor book drop; update door and security to comply with accessibility standards; use adjustable shelving for holds; mobile shelving for display; circulation desk stays in existing location with built-in book drop.
 Entry	175	215	
Circulation Desk	170	110	
Self Checkouts (express stations) and Holds	50	125	
Materials Display	15	15	
2. MARKETPLACE & DISCOVERY	315	380	Adjacent to holds and self-check; media and periodicals along tall shelves at exterior wall; relocate miscellaneous pamphlets and flyers here. Include media and periodicals here?
 Display shelving (face display) or gondolas for new materials (retail model), flexible seating areas.			
3. PUBLIC COMPUTERS & PRINTERS	434	159	Reduce from 12 to 6 computers; place all printers and copier here; eliminates extra circulation space.
 Public computers	390	115	
Printers (2)	14	14	
3D printer	15	15	
Copier	15	15	
4. KIDS & FAMILY SPACE	993	1200	Keep in the same area, defined; remove adult and teen materials; create easy flex space for children's programs.
 Kids collection and display, parent-child interactions, early literacy for preschoolers, spaces for school-age kids, child appropriate technology.			
5. TEEN SPACE	80	250	Dedicated room where study room now is; remove wall facing circ area; Option 1 shows integration with community program space.
 Interactive creative area, social seating/furnishings, collaborative work, learning spaces, collection displays and some of the teen collection, young adult literature collection.			
6. ADULT READING & STACKS	1710	1180	Reduction of media, audiobooks, etc; fewer non-fiction books; preference for travel and contemporary/popular fiction. Quantity of foreign language media?
 Adult book stacks, reading and contemplative spaces.			
7. COMMUNITY/PROGRAM SPACE	220	560	On axis with entry, shares light and visibility. Flexible furnishings for easy moving, could have spillover from Adult reading on movable shelves. Tables, easily movable furniture.
 Flexible/modular spaces, movable tables. STEM space, creative craft spaces, flexible storage/display of: tools, technology, equipment, adaptable workspace.			
8. OPERATIONS	660	600	New code-compliant restroom in new location. New book exterior drop directly into workroom, next to new loading door. 3 work stations--2 dedicated and 1 floating. Storage for program materials and office supplies. Janitorial unchanged.
 Workroom/shared workstations	500	375	
Break area with staff kitchen	120	120	
Book returns/dops	25	15	
Media returns/drops	15	0	
Loading	0	55	
Storage	0	35	
9. BUILDING SERVICES	228	256	Includes new accessible staff restroom in workroom.
 Restrooms/drinking fountain	188	216	
Janitor	20	20	
Mechanical/Electrical/IT	20	20	
TOTAL BUILDING AREA	5050	5050	

PROGRAM AREAS - EXTERIOR SPACES		Present Area sqft	Present Area sqft	Notes/Reasoning
10. ENTRY				Entry ramp expanded for public book drop and compliant loading door.
	Entry area and ramp	213	337	
	Loading ramp	43	43	
	Garbage area	127	127	
11. DECK				No change until status of easement is resolved.
	Deck	1050	1050	
TOTAL EXTERIOR AREA		1433	1557	